

COUNCIL AGENDA: MAY 7, 2013

SUBJECT: AUTHORIZATION TO ADVERTISE FOR BIDS - WELL NO. 32 PROJECT
(Drilling Phase)

SOURCE: Public Works Department - Engineering Division

COMMENT: The Plans and Project Manual have been prepared for Well No. 32 Project (Drilling Phase). The well is located on the north side of Tea Pot Dome Avenue, east of the Porterville Fairgrounds. This is the **first phase** of the well project and consists of drilling a 32" diameter bore hole about 800 feet deep, installation of steel casing and gravel envelop (gravel pack).

The well is located on City owned property and is part of the City's on-going municipal water well program that is consistent with City Council's adopted 2001 Water Master Plan. The new municipal water well will be an asset to the Central Pressure Zone where all the major storage facilities are located. The Plans and Project Manual are available for review in the La Barca Conference Room.

The City's consultant, Dee Jaspar & Associates, has prepared an Estimate of Probable Cost and the amount is \$429,792. An additional amount of \$19,536 is necessary for construction management. Total budget requirement is \$449,328.

Funding is provided by a California Infrastructure and Economic Bank (CIEDB) loan and was approved in the 2012/2013 Annual Budget. The Engineer's Estimate is attached for review.

RECOMMENDATION: That the City Council:

1. Approve Staff's recommended Plans and Project Manual; and
2. Authorize staff to advertise for bids on the project.

ATTACHMENTS: Locator Map
Estimate of Probable Cost

P:\pubworks\General\Council\Authorization to Advertise for Bids - Well No. 32 - 2013-05-07.doc

Dir BRL Appropriated/Funded MB CM J

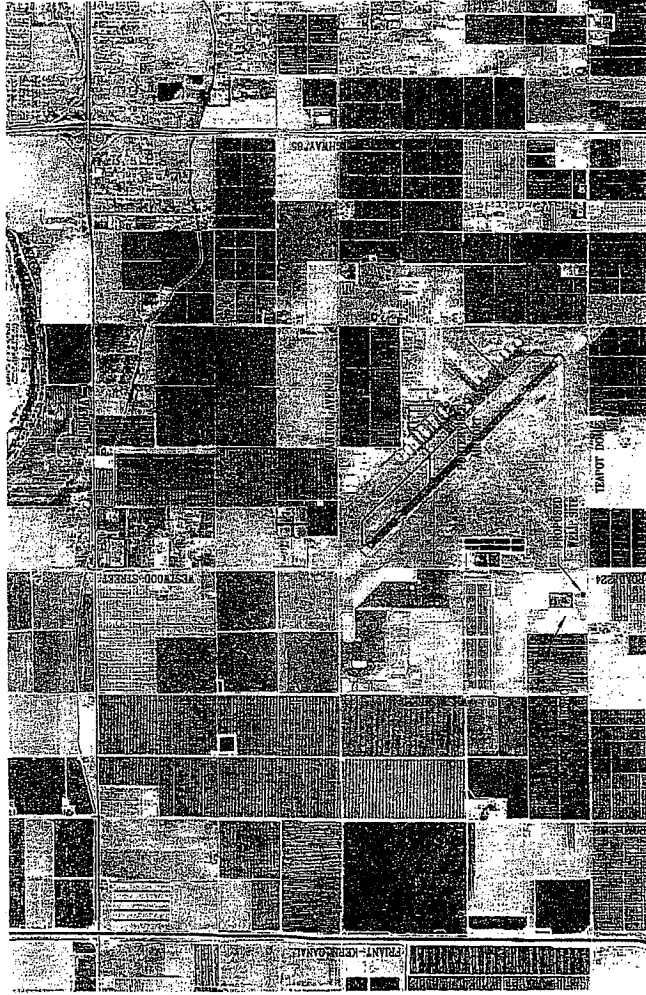
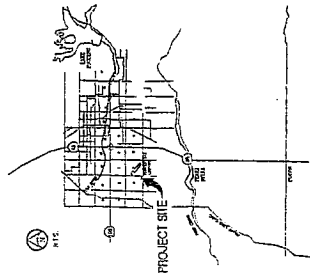
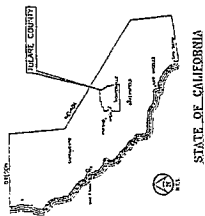
Item No. 2

DRILLING A MUNICIPAL WATER WELL

CITY WELL NO. 32

PROJECT NO.: 89-9722

BID NO.: 12/13 - CP1797



VICINITY MAP
NOT TO SCALE
SECTION 6, T22S, R27E, M.D.B.&M.

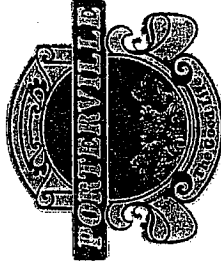
CITY OF PORTERVILLE
TULARE COUNTY, CALIFORNIA

APRIL 4, 2013

SHEET INDEX

- 1 COVER SHEET & VICINITY MAP
- 2 SITE PLAN
- 3 WELL CROSS SECTION
- 4 TOTAL SHEETS

NOTES:
1. BEFORE DRILLING, CALL ALL CITY AND COUNTY
OF TULARE COUNTY, CALIFORNIA, TO
CONDUCT A PRELIMINARY INVESTIGATION
CONDUCTED BY THE CITY ENGINEER.
2. THE CITY ENGINEER SHALL BE RESPONSIBLE FOR
ALL ACCESSORY FEES, INCLUDING THE
CITY ENGINEER'S FEE, AND THE
CITY ENGINEER'S FEE SHALL BE A
PART OF THE PROJECT COST.



JOE JASPAR & ASSOCIATES, INC.
CIVIL ENGINEER
1000 N. G ST. SUITE 100
PORTERVILLE, CA 93257
TEL: 559.782.1111
FAX: 559.782.1112

APPROVED BY THE CITY ENGINEER
DATE: 4-5-13
BY: [Signature]

APPROVED BY THE CITY ENGINEER
DATE: 4-5-13
BY: [Signature]

APPROVED BY THE CITY ENGINEER
DATE: 4-5-13
BY: [Signature]

APPROVED BY THE CITY ENGINEER
DATE: 4-5-13
BY: [Signature]

APPROVED BY THE CITY ENGINEER
DATE: 4-5-13
BY: [Signature]

APPROVED BY THE CITY ENGINEER
DATE: 4-5-13
BY: [Signature]

APPROVED BY THE CITY ENGINEER
DATE: 4-5-13
BY: [Signature]

APPROVED BY THE CITY ENGINEER
DATE: 4-5-13
BY: [Signature]

APPROVED BY THE CITY ENGINEER
DATE: 4-5-13
BY: [Signature]

APPROVED BY THE CITY ENGINEER
DATE: 4-5-13
BY: [Signature]

APPROVED BY THE CITY ENGINEER
DATE: 4-5-13
BY: [Signature]

APPROVED BY THE CITY ENGINEER
DATE: 4-5-13
BY: [Signature]

APPROVED BY THE CITY ENGINEER
DATE: 4-5-13
BY: [Signature]

APPROVED BY THE CITY ENGINEER
DATE: 4-5-13
BY: [Signature]

APPROVED BY THE CITY ENGINEER
DATE: 4-5-13
BY: [Signature]

APPROVED BY THE CITY ENGINEER
DATE: 4-5-13
BY: [Signature]

APPROVED BY THE CITY ENGINEER
DATE: 4-5-13
BY: [Signature]

APPROVED BY THE CITY ENGINEER
DATE: 4-5-13
BY: [Signature]

APPROVED BY THE CITY ENGINEER
DATE: 4-5-13
BY: [Signature]

APPROVED BY THE CITY ENGINEER
DATE: 4-5-13
BY: [Signature]

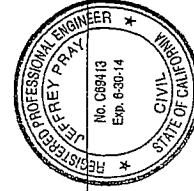
APPROVED BY THE CITY ENGINEER
DATE: 4-5-13
BY: [Signature]

APPROVED BY THE CITY ENGINEER
DATE: 4-5-13
BY: [Signature]

APPROVED BY THE CITY ENGINEER
DATE: 4-5-13
BY: [Signature]

APPROVED BY THE CITY ENGINEER
DATE: 4-5-13
BY: [Signature]

APPROVED BY THE CITY ENGINEER
DATE: 4-5-13
BY: [Signature]





DEE JASPAR & ASSOCIATES, INC.
CONSULTING CIVIL ENGINEERS

15 W. Putnam Ave., 2nd Floor
Porterville, CA 93257
PHONE (559) 791-9286
FAX (661) 393-4799

April 4, 2013

City of Porterville
Drilling a Municipal Water Well - City Well No. 32

Project No.: 89-9722-88
Bid No.: 12/13 - CP1797

Engineer's Cost Estimate

Item	Item Description	Quantity	Unit	Unit Price	Amount
1	Mobilization, Demobilization, & Cleanup	1	LS	\$50,000	\$50,000
2	Conductor Casing	50	LF	\$350	\$17,500
3	Pilot Hole Construction	770	LF	\$60	\$46,200
4	Formation Sampling	5	EA	\$12,000	\$60,000
5	Ream Pilot 28" Hole	770	LF	\$50	\$38,500
6	16 5/8" x 5/16" COR-TEN Blank Casing	290	LF	\$180	\$52,200
7	16 5/8" x 5/16" COR-TEN Louvered Casing	520	LF	\$260	\$135,200
8	4" Gravel Feed Tube	250	LF	\$10	\$2,500
9	2" Sounding Tube	265	LF	\$5	\$1,325
10	Gravel Envelope (SRI)	570	LF	\$45	\$25,650
11	Cement Seal	240	LF	\$35	\$8,400
12	Swabbing & Air Lifting	60	HRS	\$320	\$19,200
13	Pumping & Surging	48	HRS	\$300	\$14,400
14	Production Testing	24	HRS	\$300	\$7,200
15	Well Video	1	LS	\$1,500	\$1,500
Subtotal					\$479,775
10% Contingency					\$47,978
Total					\$527,753

Prepared By: Jeffrey J. Pray
Jeffrey J. Pray, Dee Jaspar & Associates, Inc.

4-5-13

Date

Reviewed By: Michael K. Reed
Michael K. Reed, City Engineer

4-26-2013

Date

Reviewed By: Baldomero S. Rodriguez
Baldomero S. Rodriguez, Public Works Director

4/29/13

Date

Reviewed By: John Lollis
John Lollis, City Manager

05/01/13

Date

